

Solutions STAIR Guard Rail Planning Guide

STEP
1

COLOR:

White Black Bronze Custom Color

(See Custom Color Program for further details.
Page 3 of Solutions Railing Catalog).

STEP
2

GUARD RAIL HEIGHT:

Residential (36") Commercial (42")

STEP
4

BALUSTER STYLE:

Round Square Glass

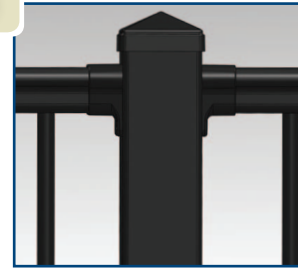
STEP
5

MOUNTING STYLE:

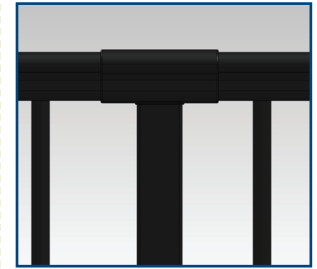
Surface Mount Side/Fascia Mount

STEP
3

POST TO RAIL CONFIGURATION:



POST TO POST



OVER THE POST

STEP
6

POST SIZE:

4" Sleeve Over (Post To Post) 3-1/2" Post Sleeve (Post To Post) 3-1/2" Flanged Post (Post To Post) 1-7/8" Post Sleeve (Over The Post)
Sleeves Over Nominal 4" x 4" Post

STEP
7

USE GRID ON BACK TO DRAW DECK OR PORCH AREA

Reference sketch of deck with posts and rail sections. Count all rail sections and enter quantities below.

STEP
8

LIST NUMBER OF ITEMS REQUIRED TO COMPLETE PROJECT FROM SKETCH ON BACK OF SHEET:

For rail sections shorter than standard length go to the next longer rail kit - will need to be cut down. **(Use rail sections no longer than 8' in length)**
Count all posts and enter quantities below **(Note: If mixing post sizes enter quantities on two lines)**. For each rail section select top rail brackets based on Post to Rail Configuration - 1 Set of brackets for each rail section (kit) (Note: Bottom brackets are supplied in kits).

RAILING SECTIONS

4' _____ 6' _____ 8' _____

POSTS AND POST ACCESSORIES:

Posts _____ Post Size _____ Post Mounts _____

Posts _____ Post Size _____ Post Mounts _____

Post Trim _____ Post Caps _____

Post Trim _____ Post Caps _____

POST TO POST CONNECTOR BRACKETS:

Top Rail "Multi-Pitch" Bracket (2/pk) _____

30° - 34° Top Rail "Fixed-Pitch" Bracket (2/pk) _____

OVER THE POST CONNECTOR BRACKETS: (NOTE: 1 PAIR PER SECTION)

Top Rail "Multi-Pitch" Line Bracket _____ Top Rail "Multi-Pitch" End Bracket _____

Top Rail "Multi-Pitch" End Cap _____ Bottom Rail "Multi-Pitch" Bracket (2/pk) _____

Bottom Rail "Fixed-Pitch" Bracket (2/pk) _____

Top Rail Brackets (PTP or OTP) Sold Separately



Top Rail "Multi-Pitch" Bracket (2/pk)



Top Rail "Fixed-Pitch" Bracket (2/pk)



Top Rail "Multi-Pitch" Line Bracket



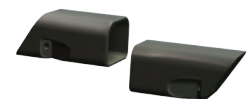
Top Rail "Multi-Pitch" End Bracket



Top Rail "Multi-Pitch" End Cap



Bottom Rail "Multi-Pitch" End Bracket (2/pk)



30° - 34° Bottom Rail "Fixed-Pitch" Bracket (2/pk)

